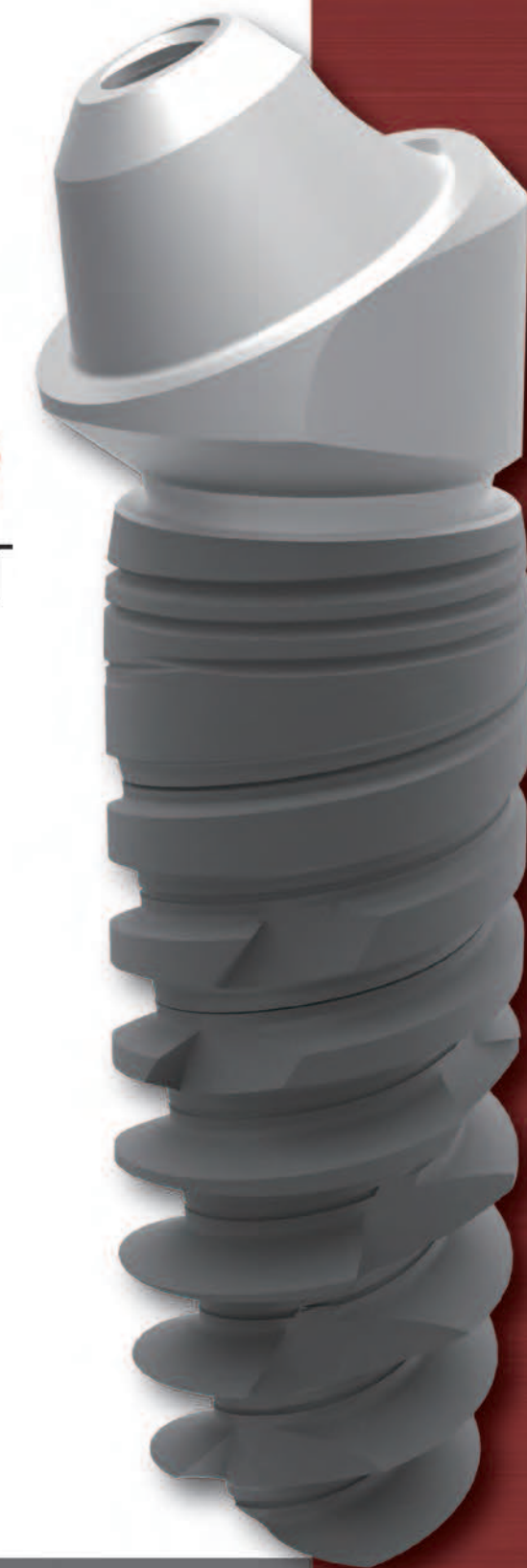


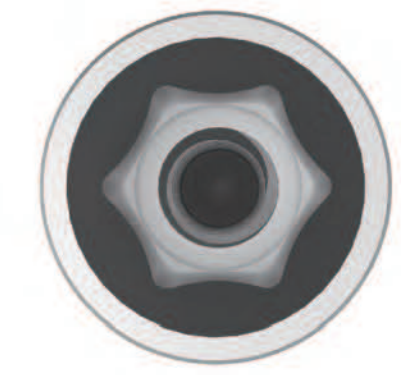
trausim 创英

trausim  **DENTAL IMPLANT SYSTEM**



敢创
BRAVE
INNOVATIVE
精英
PREMIUM
TALENTED

Diameter (mm)	Length (mm)					
Φ3.5	8.5	10	11.5	13	15	18
Φ4.3	8.5	10	11.5	13	15	18
Φ5.0	8.5	10	11.5	13	15	18
Φ5.5	8.5	10	11.5	13	15	18



Jiangsu Trausim Medical Instrument Co.,Ltd.
 Customer Service:86-519-86391029
 E-mail:market@trausim.com
 Web: www.trausim.com
 No.18 Jincheng Rd,Wujin Economic Development Zone,213149,Changzhou City,Jiangsu Province,China

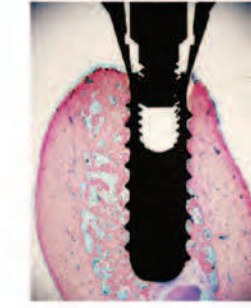
敢创
BRAVE
INNOVATIVE
精英
PREMIUM
TALENTED

Jiangsu Trausim Medical Instrument Co., Ltd. is a high-tech enterprise specialized in R&D, manufacturing, and marketing of dental implant systems and surgical instruments. Trausim collaborates with German and Swiss institutes to develop robust dental implant system and make continuous effort to provide better products to dentists and patients.

Surface Treatment : SLA

Raw Material : Pure Titanium Grade 4 (Cold drawn, Import from USA)

CNC Lathe Machine : Citizen and Tornos

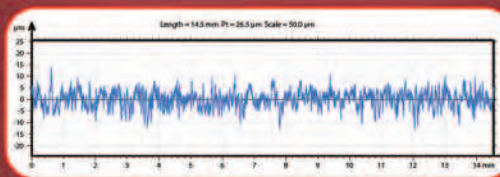
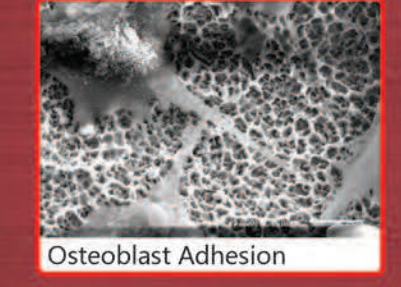
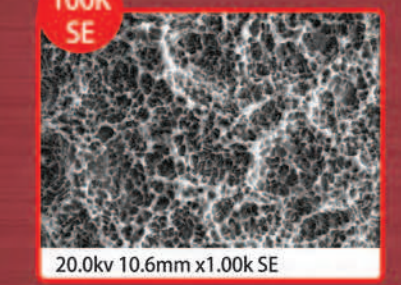
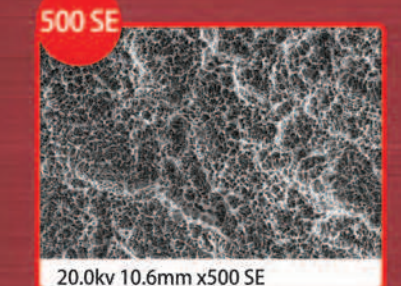


Diameter (mm)	Length (mm)			
LN RP Φ3.3	8	10	12	14
HN RP Φ3.3	8	10	12	14
LN RP Φ4.1	8	10	12	14
HN RP Φ4.1	8	10	12	14
LN RP Φ4.8	8	10	12	14
HN RP Φ4.8	8	10	12	14
LN WP Φ4.8	8	10	12	/
HN WP Φ4.8	8	10	12	/

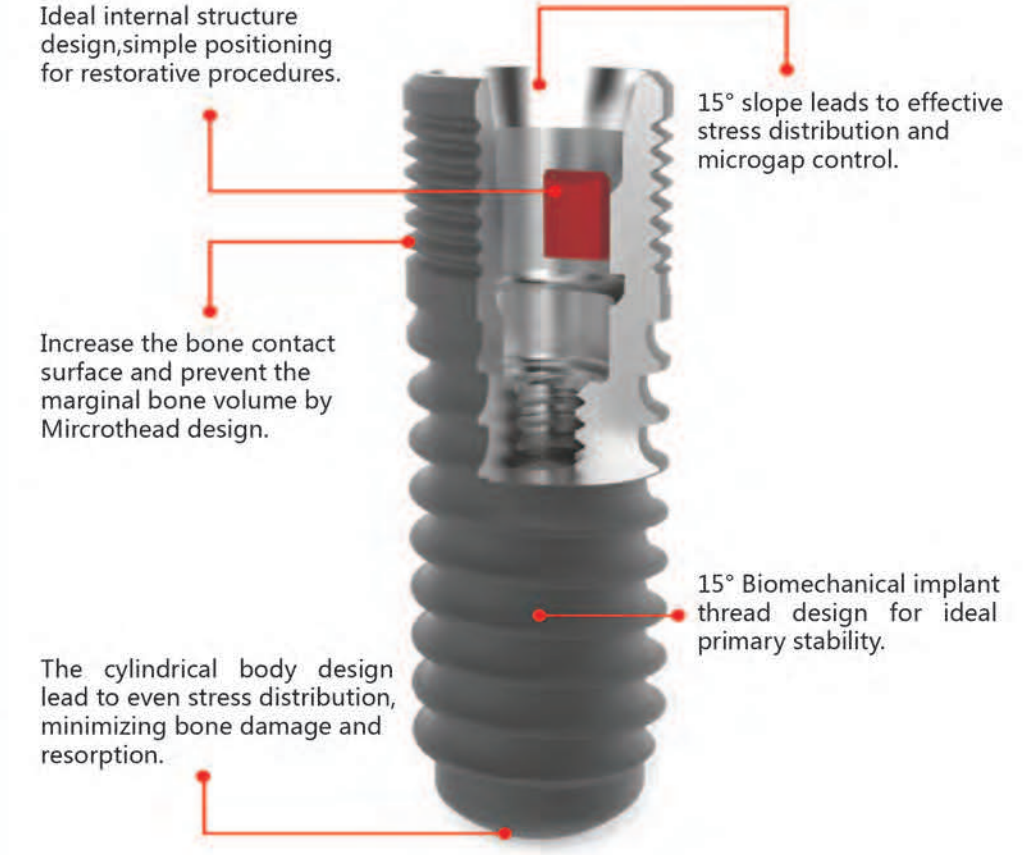
LN:Low Neck HN:High Neck RP:Regular Platform WP:Wide Platform



MPS(sandblasted,large grit,and acid etching)surface treatment leads to fast and stable osseointegration;ultra clean surface,enable osteoblasts to attach to the implant surface.



Ra 2.5, MPS surface treatment ensure the excellent roughness which increase the osseointegration area, guiding the osteoblast adhere to the surface of implant.



Diameter (mm)	Length (mm)			
Φ3.3	8	10	12	14
Φ4.1	8	10	12	14
Φ4.8	8	10	12	14

